



# The Crescent

Vol. 83, No. 6

George Fox College, Newberg, Oregon

Friday, February 4, 1972

## "Every Living Thing"



**HOMECOMING QUEEN** for 1972 will be one of the five princesses elected by the classes and the basketball team. The princesses are Dodie Brizendine, senior; Charla Hanson, jun-

ior; Sheryl Barnett, basketball team. Ellen Perry, sophomore; and Divonna Littlefield, freshmen.

"Every Living Thing" is the theme for Homecoming 1972, a theme reflecting current interest in ecology and nature.

Activities begin February 11 with election of the queen by the student body. Coronation of the 1972 queen will be Friday at 8:00 p.m. in Woodmar Auditorium. A reception for the queen will follow in Heacock Commons. Students and alumni are invited.

Saturday (February 12) from 10:00 to 11:00 a.m. in Heacock Commons is the Queen's Brunch with students

and parents invited. Students will present a musical program.

Open house follows from 1:00 to 4:00 p.m. Clubs and Living halls are encouraged to make murals for display. Trophies for the best murals will be awarded at half-time at the game Saturday night.

The GFC Bruins host the Warner Pacific Knights for Homecoming. A pep rally will precede the Jayvee game at 5:30 p.m. Kappa Tau Epsilon is sponsoring an after-game party in Heacock Commons with music and food.

## Competition Held

Homecoming in Edwards Hall will feature competition among the six floors of the dormitory.

Three faculty members, Donna Marks, Ed Higgins, and another will select one floor to receive an award as the best decorated.

The lobby of the dormitory will be decorated and will compete with the other two dorm lobbies for a separate

award.

Joyce Miller, head resident for Edwards, will award the prize of \$5 to the floor chosen by the faculty judges.

Alumni and friends of the college are invited to visit Edwards on February 12 between 1 and 4 p.m.

Judging will take place between 1 and 2 p.m. during this all-campus open house.

## Homecoming Court Chosen

During the week of January 24 through the 28th, elections were conducted by each class to select a homecoming princess. The elections took place in the SUB during lunch. The winners were announced at dinner.

The freshman class princess is Divonna Littlefield. She lives at home in Newberg and commutes to school. Divonna is 5'4" has brown hair and hazel eyes. She is a music major. In her spare time she enjoys playing the violin, piano and flute. She also sings in a girls trio and works with the Friends Youth. She spent four years playing in a symphony orchestra in

Wichita, Kansas where she is from originally.

The sophomore class elected Ellen Perry as their princess. She is a 5'4" music education major. Ellen has light brown hair and green eyes. Her interests include piano and insect collecting. She participates in girls basketball and field hockey. Denair, California is Ellen's home.

The junior class princess is Charla Hanson. She is a 5'4" blue eyed cheerleader. Charla's major is music education. At the present time she is teaching reading twice a week at a nearby grade school. Charla's hobbies include cooking and sewing. Her home is Camas, Washington.

The senior class princess is Dodie Brizendine. She is 5'7" has black hair and dark

brown eyes. Dodie is a home economics major and hopes to work in a Test Kitchen when she graduates. Her interests include cooking, sewing, water sports, bicycle riding, music and reading. She is from Yakima, Washington.

The basketball players selected Sheryl Barnett as their princess. She is a freshman and majoring in elementary education. Sheryl is 5'3" has blond hair and blue eyes. Her activities include volleyball and basketball. Sheryl is from Earlham, Iowa.

## Fall Omega Awarded

Once again it is time to present the Omega Award to the most "outstanding" living area - scholastically speaking. Off-Campus Marrieds led the unofficial tally with a cumulative GPA of 3.38. Edwards I South was second with Edwards II North a close third. The final rundown is as follows:

Off-Campus Married 3.38  
Edwards I South 3.195

Edwards II North	3.186
Penn. II Women	3.182
Penn. I Women	3.156
Hobson III	3.112
Hobson I	2.998
Off-Campus Singles	2.988
Edwards II South	2.986
Edwards III South	2.985
Hobson II	2.929
Penn. I Men	2.922
Special Students	2.87
(less than 12 units)	
Edwards I North	2.84
Edwards III North	2.81
Penn. II Men	2.33

## Gang Hosts Roaring 20's Party

by Betty Ball

The notorious Circle K Gang threw its annual bash last Friday night.

According to the "Boss" Sargent, "a lot of guys showed up this year."

Our Gang Movies were shown along with a Betty Grable movie. Muscles Frazier brought in a quartet from the south side. Muscles said, "They don't sing too pretty but they're cheap." Mugsey Kellum agreed, adding "That Rocky Rosevear sure ain't no Jolson."

But, the flappers seemed to love the foursome. Lefty Field, Tiny Friesen, Trigger Thornburg and Rocky were "a big hit" according to Flora House.

The party went without incident. Elliot Ankeny kept a stake out across the street. The only shooting was an exchange of peanut fire between rival tables, according to Elliot.



TRICIA HINSHAW and CARMEN HUGHES enjoy the action at the annual Circle K Roaring 20's Party.



TINY, LEFTY, ROCKEY and TRIGGER entertained at the Circle K bash.

# Rumors Can Be Killed

by Marian Derlet

Most students would probably not buy the **Crescent** if they saw it in a news rack. However, student funds are used to support the **Crescent** - for better or worse. Something is wrong.

No one can deny the importance of the media in today's world. Lack of effective communication can lead to serious misunderstandings and general apathy. Too much of what goes on at GFC is passed by word of mouth each person consciously or unconsciously altering the story.

On a campus as small as GFC it is not long before everyone has heard a "story" whose original news value has long disappeared. An often repeated phrase is, "That's not what I heard."

A definite need for the **Crescent** exists, but there also exists the problem of getting news for the paper. Why do students read articles on a clubbazaar and never read any printed facts on what happened to Pat King? Everyone heard a different version of what went on and judged situations and people accordingly. Since news like this gets around anyway, it would be much better for it to be printed originally instead of distorted through the grapevine.

O.K., why aren't the stories written? Who is willing to write them? The **Crescent** will not improve until interested persons are willing to contribute a little time to research and write on various issues. If more people would share the load, reporting would not seem such a burden.

Complaints are heard on all sides, but no one even bothers to write letters to the editor most of the time. If each student on the George Fox College campus wrote one article per year the quality and quantity of articles would improve immeasurably. To quote the journalism staff of the U. of California at Riverside, "Put up or shut up!" How about it?

## Letters To The Editor

Dear Editor,

I would like to take this opportunity to congratulate Joey Soon on the great job he has been doing. Lots of little things that make a big difference, like adding a piano for atmosphere, or having special dinners. I think it's really great that we have a food manager that takes such a personal interest in us.

Sincerely,  
Anonomous

Dear Editor,

I am a concerned student that lives on the campus of GFC. I read your article about "Peer Relationship." I feel that the person that wrote this article did not know the whole story or only knew one side of the story to begin with. I think a person should know both sides of the story before they start to write it. Well, I know about both sides of the story. So I would just like to tell you a few things about it.

I came to GFC because of the Christian life and the rules that are set up against alcohol, tobacco, and drugs. I know at least half of the students here have come for the same reasons too. Well, back to the story. I was not like a "kindergarten-type tattletale," if I may quote you from your article.

I feel that a person should stand up for what is right, and not just cover it up or just stand by and let it happen. I know some people do things that we do not think is right and we know they are breaking the rules at GFC but they say to themselves, maybe he or she will change. Well, I believe a person can change for the better too, but you cannot let it go on forever. You have to put your foot down sometime.

Well, I think it is time for us as Christians to take a stand and speak out for what we know is right. Why should we sit back and let a few people get by with breaking the rules the rest of us follow. Or should we be silent Christians and say nothing about it. Well, we have been sitting and being silent long enough. If some people

do not like the rules at GFC then they can go to another college for a lot less money.

And if we lose a few people because we, as students, start to enforce the rules that we want to live by as Christians, we should not mind losing them because this kind of person does not help in the spreading of God's word. I think God also has rules about alcohol, tobacco, and drugs. The Bible says that your body is the temple where God may dwell, and it should be free from sin, or clean as snow. And we are here to spread God's word. Or what are you here for?

Yours truly,  
a concerned student  
Don L. Calkins

To the Editor:  
AGAIN I am peeved with the SYSTEM

Tell me, O Theophilus, why is it the teacher evaluations were passed out after faculty contracts were (or weren't as the case may be)? Apparently our teacher evaluations are not considered. Don't students have any say in whom we have on our faculty?

Why does George Fox College, with a background of Christian heritage and principles, slack off in the religion department when there is a "revival" on campus and kids with no major are declaring Christian Education as their major? Personally, I can not see taking Christian Evangelism from the other members of the department - they just don't generate the enthusiasm. Also, I feel very strange in a Christian college with no chaplain.

In the words of President LeShana earlier this term, trust God for your money. Sure, that's okay for our faith promises and our missionaries but when it comes down to the real world, we need concrete evidence of money in the bank to run a school on.

This is a liberal arts college with fine representations in many of the departments. Religion is one of the departments of GFC and I feel it

# CEF Training for Good News Clubs

Founded in 1942 by Mr. and Mrs. J. Overholtzer, Child Evangelism Fellowship (CEF) is an international evangelical organization for reaching the world's lost children for Christ. CEF operates in every state in the United States and in sixty countries around the world.

The Bible clearly teaches that little children can be saved. In Mathew 18:14 Jesus says it is not God's will that any child should perish.

What then is the Christian's responsibility to the Lord concerning children? CEF believes that its responsibility is to "Train up a child in the way he should go," (Prov. 22:6) and to teach children

## The Crescent

Editor . . . . . Charlie Howard  
 Assistant Editor . . . . . Nancy Gathright  
 Copy Editor . . . . . Betty Ball  
 Sports Editor . . . . . Mike DiGioia  
 Business Manager . . . . . Gary Salisbury  
 Circulation Manager . . . . . Debbi Corum  
 Photographer . . . . . Dave Hampton  
 Staff . . . Glenn Anderson, Faith Knopfle, Jackle Lundy  
 Kevin Mills, Carolyn Richey La Vern Roy, Greg Slemp

Entered as second class mail at the Newberg, Oregon  
 Post Office 97132. Subscriptions \$2.95 per year.

the word of God. (Deut. 6:6,7).

Realizing that some children never receive spiritual training in their homes or in a church, and believing that a life is formed by Christian principles, CEF has organized neighborhood "Good News Clubs" which meet once a week for Bible stories,

songs, contests, and memory verses.

By teaching a Good News Club, you can help lead children to Christ. CEF meetings are held each Thursday at 3:30 p.m. in the library seminary room. It is an excellent opportunity to be a missionary at home.

# 100 Make Fall Honor Roll

The following students achieved a 3.5 GPA or above fall term:

### FRESHMEN

Laura Aldi	3.77
Patricia Bradshaw	3.54
Kathy Burman	3.77
Wayne Chapman	3.51
Denny Conant	3.77
Audrey Ewert	3.88
Deborah Field	3.54
Loreen Fitzwater	3.77
Clifton Frazier	3.81
Roger House	3.68
Kathy Hoffman	4.00
Marsha Jensen	3.88
Karen Knight	3.71
Cindy Ho	3.57
Zana Krupp	3.69
Nancy Kuhn	3.59
Joann Lehman	4.00
Divonna Littlefield	3.89
Meyer Louie	4.00
Dean Matson	4.00
Douglas McCallum	3.56
Dan McConaughy	3.59
Timothy Minkel	3.69
Louise Minthorne	4.00
Gary Ogier	4.00
Patricia O'Neal	4.00
K. Kay Ridinger	4.00
Gary Sandoe	3.69
Renee Schaffer	3.76
Peggy Schwab	4.00
Jon Tippin	3.66
Connie Varce	3.80
John Wehlitz	3.55

### SOPHOMORES

Melanie Burson	3.83
Lois Calhoun	3.57
Deborah Corum	3.56
Rhonda Enebo	3.53
Peggy Johnson	3.75
Nancy Lehman	4.00
Phyllis Martin	3.56
Marjorie May	4.00
Ronald Mulkey	3.56
Ellen Perry	4.00
Darryl Reid	3.71
Ruth Ricarte	3.83
Phyllis Roberts	3.59
Becki Rust	3.65
Greg Slemp	3.58
Cheryl Stephanie	4.00
Randall Thornburg	3.95
Lana Thurston	3.75
Rachel Whittlesey	3.60
Deborah Wilson	3.75

### JUNIORS

Shirley Barnett	3.69
Martha Beck	3.75
Robert L. Bletscher	3.64
Marian Derlet	4.00
Carl Duhrkoop	3.69
Rodney Edwards	3.69
Donald E. Farnham	3.71
Michael Frazier	3.56
Nancy Gathright	3.50
Katherine Haisch	3.92
Jan Hedderly	3.60
Katherine Hinshaw	3.65
Walt Kilewer	3.54

David Krupp	3.50
Dwain C. Lundy	4.00
John Macy	3.73
Phyllis Miller	3.81
Thomas Miller	3.88
Dwight Minthorne	3.63
David Sargent	4.00
Peggy Stands	4.00
Suzanne Swaren	3.79
Sarah Jane Tarr	4.00
Roberta Zimmerman	3.65

### SENIORS

Terry Dalke	3.80
Sharon Dunlap	3.50
Gale Field	3.65
Steve Gilroy	4.00
John Jill	4.00
John Holton	4.00
Glenda House	3.60
Charlotte Krebs	4.00
Dwight Larson	4.00
Marilyn May	3.75
David McDonald	3.73
Mark Moore	4.00
Stanley Morse	3.53
Linda May	3.87
Catherine Pettijohn	4.00
Cheryl Prew	3.93
James Prew	3.75
Geoffrey Proehl	4.00
Karen Rathkey	4.00
Kathleen Repp	4.00
Fred Shoff	4.00
Louise Sperling	3.50
Lowell Weinacht	3.77

will greatly lack next year due to the rumored cut-back.

Right now, President LeShana and the business people are looking at the future. Somebody once said the future of the future is the present.

Think about it - pray about it - and most of all, tell the SYSTEM how you feel about it.

Cringingly,  
name withheld on demand  
To the Editor:

I represent a thought and an idea. I am a student and I have a brain. I also have eyes and right now it seems very hard to close them to many things.

My basic concern is over the financial status of the school. Does the precious basketball team take precedence over a vacuum cleaner? Obviously, one is a necessity and the other is a questionable luxury.

Personally, I thought the cut in tuition was great! However, the \$9 each term that goes to room and board had better insure me a clean sheet at least once every OTHER week, and no indigestion from the greasy fried eggs on Sunday noon, or the leftover breakfast that turns into a pineapple-cheese-old toast "selection" for lunch.

As for the student affairs fee reduction, I would much rather have the \$9 basketball "fee" be put into the women's

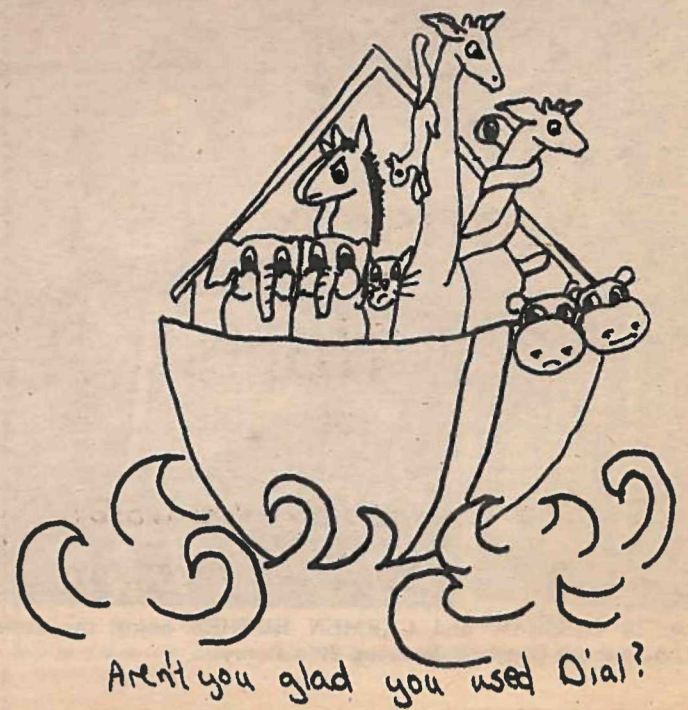
hockey budget. I like good sports and people that are human.

Two months ago, a question was put before the Student Affairs Committee concerning the type of false fire alarms penalty "enforced" on campus. As yet, there has been no outward sign of life from the committee as to any action - pro-or con. If pulling fire alarms is the way the school is going to make money, then, more power to them, but I wouldn't stand

for it!

My last gripe concerns the procedure of the general budget in appropriating designated funds if there wasn't enough money in the fund to serve its purpose. In other words, where is the PIANO fund that was instigated several years ago?

Well, I've spoken my piece. I hope it was hard to swallow. I hope to see a change, out where the new begins, don't you?  
signed, xxx



# Fox CLEP Expands

In May, 1971, George Fox became the first college in Oregon to establish a credit-by-examination program. The initial program, allowing up to 24 hours of credit by this method, is now expanding to allow up to 96 hours.

This alternate route to education helps students accelerate or broaden their education. It also means that a student will now be able to take up to one-half of his college requirements without ever attending class.

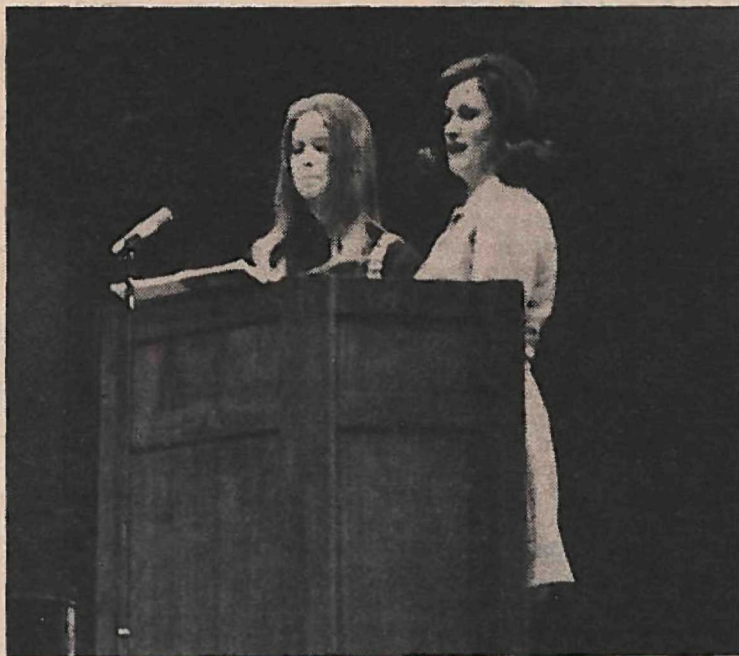
The nationally standardized College Level Examination Program (CLEP) is the current system utilized. Testing will be given at a regional testing center or on campus. CLEP is based on a pass-fail system.

If the test-takers meet the requirements established by the George Fox faculty members, they will receive course credit just as if they had attended the regular lecture class.

A fee of \$5 per credit hour or a minimum of \$25 must be paid by the student if he scores high enough to pass the CLEP test.

When this program first came to George Fox it was only experimental. Now, with recent faculty approval, it has expanded to offer 150 credit possibilities in 22 different courses.

Subjects now faculty-approved for CLEP are history of American education, educational psychology, English composition, English literature, American literature, general biology, general chemistry, algebra-trigonometry, introductory calculus, Bible literature, principles of accounting, business law, introduction to economics, money and banking, civilizations, United States history, American government, general psychology, human growth and development, statistics, tests and measurements, and introduction to sociology.



ROBERTA BARNETT and BARBARA GRINALDS represent the music department by singing in chapel.

# Drama Presents Weekend Play

Six George Fox students are currently presenting the drama "Christ in the Concrete City" on weekends in Oregon and Washington.

The play by Phillip W. Turner is a contemporary drama about the death and resurrection of Jesus Christ.

The story of Christ's sacrifice has been condensed greatly so the cast of six can portray it. Yet, each member of the troupe steps in and out of character easily; each actor representing several characters.

The play speaks to the individual; yet, it also speaks to all mankind. The effect of universal appeal is projected by the cast speaking as a chorus, several voices blending together as a unit.

Cast members are William King, Faith Knoepfle, Larry Smith, Neil Kellum, Irene Jacques, Sandy Simpson, and Thomas Miller, lights and sound. Dr. Geraldine Mitsch is director.

# Music Faculty Plays in Recital

The annual George Fox College Faculty Recital was given Thursday (Jan. 27) by four full-time and four part-time faculty members. Three GFC students and a composition by a fourth were also included. In all, nine musical numbers were performed.

A woodwind quintet which played numbers by Mulholland and Haydn was composed of Christabel Lauinger on flute, Robert Lauinger on clarinet, Eleanor Jones on oboe, and Allen Yankee on bassoon. Mrs.

Jones is from McMinnville, and Yankee is from McMinnville High School.

Schubert and Ralph Vaughan-Williams were the composers of numbers played by a chamber trio. Trio members were Mrs. Lauinger on piano, Mrs. Dennis Hagen, soprano, and Dr. Lauinger on clarinet.

The string quartet, featuring James Annala, Divonna Littlefield, and Phyllis Martin on violins and Dwight Larson on cello, accompanied Professor Jerry Friesen, baritone, in Samuel Barber's "Dover Beach." An added attraction was an original number "Adagio" written by Tim Minikel, a freshman, who wrote the selection for an assignment in his music theory class. This selection was played by Mrs. Lauinger on flute.

There also were solos by Richard Elliott, trumpet; David Howard, piano; and Jerry Friesen, baritone.

# Safari Offered

A seven nation tour of Africa and Europe will be offered by GFC this summer at a cost of \$1,749.

Departure date will be June 14 or 15 with participants visiting Burundi, Uganda, Egypt, Greece, Italy, and a major Western Europe city yet to be chosen.

According to GFC Director of International Studies Paul Mills course credit may be received in missions, Biblical Archaeology and possibly other areas not yet determined.

The tour will be limited to 20 persons due to housing restrictions. In Africa students will live with missionaries. It is hoped students can gain practical experience on the mission field.

Travelers will attend lectures, visit museums and mingle with the native people to acquaint themselves anthropologically with the countries.

Travel price includes registration, jet flight round trip, entrance fees and tips and lodging and meals excluding eight meals in Europe.

Further details on registration, fee payments, or the tour itself may be obtained from Mills.

Freedom is your right to be yourself, to make mistakes, to fail and try again. No failure is final; freedom always gives you another chance.

# Jobs For God's People

"Matching God's people to the world need" is the purpose of a new service organization called Intermatch. It is sponsored by a Christian corporation, The International Christian Organization or Interchristo.

The service was developed and is operated solely as a service to God's people everywhere for the advancement of the cause of Christ.

Over 100 mission organizations and Christian agencies describe their needs through standardized job description forms which are fed into a computer data bank. Then job-seekers fill out a form on

background, education, and interests.

This information is placed in the computers and a complete report is then available on worldwide opportunities to match one's special skills and interest.

Thousands of job opportunities are open, ranging from data processing to camping. Jobs can be found throughout the world. For more information write: Intermatch, P.O. Box 9323, Seattle, Washington 98109.

God giveth the shoulder according to the burden.  
German Proverb

How about  
**Surfing in HAWAII or Skiing in ALASKA**  
during Spring Vacation?  
Call or Stop by  
**Newberg TRAVEL**  
811 E. First 538-9111

Help Keep GFC Clean  
Maintenance

**Darby's Restaurant**  
It's the Food!  
Call 538-3588  
Orders to Go—

ON VALENTINE'S DAY  
**Send Love**  
Flowers say it best  
cut flowers corsages ARRANGEMENTS PLANTS  
WE DELIVER ANYWHERE IN THE NEWBERG AREA  
**The Flower Gallery**  
1505 PORTLAND ROAD  
PHONE: 538-5704

For Your  
**Manson florist**  
Flowers whisper softly what words can never say  
Ph. 538-4311

**Russell Stover**  
CANDIES  
valentine's day  
feb. 14  
**NEWBERG DRUG**  
606 E. 1st St.

Remember Someone with Flowers on  
**Valentine's Day**  
Gainers Food Market and Florist  
518 E. 1st 538-2713

**R.F. STEVENS JEWELERS**  
Diamonds & Watches  
Occasional Gifts  
600 E. 1st 538-3421

# Girls Play Basketball Too

by Arlene Zimmerman

This year's George Fox girls' basketball team, coached by Dr. Marge Weesner, assisted by Miss Nadine Brood, consists primarily of new members. Charlotte Krebs, a senior, and juniors Shirley Barnett, Carol Wright, and Kathy Haisch are the only girls on the 11-member team who were on it last year. The other members are freshmen, except senior Mary Ferguson.

The distaff Bruins have been practicing hard and are showing a lot of improvement. Top

rebounders are Charlotte Krebs and Carol Sodestrom, with Shirley Bradley showing a lot of promise in this area.

The Barnett sisters, Shirley and Sheryl, make an effective playing combination. Charlotte Krebs is hard to stop in the key and Shirley Barnett shoots well from any place on the court.

The team has been plagued by injuries. Carmen Hughes hasn't been able to play in a game yet. Vicki Lindquist has had problems with her knee and Jean Dempsey suf-

fered a sprained ankle in a Saturday practice and will be out of play for at least one game.

The schedule is:

- Jan. 28 - Lane Community, there
  - Jan. 31 - Mt. Hood Community, here
  - Feb. 1 - Willamette, here
  - Feb. 3 - Oregon State - B team, here
  - Feb. 9 - Pacific, there
  - Feb. 11 - University of Ore., there
  - Feb. 15 - Lewis & Clark, here
  - Feb. 17 - OCE, here
  - Feb. 25-26 - NCWSA tournament, U of O
  - Mar. 2 - Linfield yet to be
- Marylhurst scheduled

# Bruins Take Two - WP and EOC

One of Bruin basketball coach Lorin Miller's philosophies is to reach down and pull something out from deep inside, especially when the situation appears hopeless. Reach down the Bruins did, the result being two solid victories over Warner Pacific, 82-77, and Eastern Oregon, 91-83.

Against Warner, the blue and gold fell behind by 10 at halftime and trailed by as much as 17, the score was 58-41, with little over ten minutes left in the game. After a time-out, George Fox applied a tight full-court press and gradually chipped away at the lead until they caught Warner at 68-all with 3:29 left to play. From then on the Bruins just plain ran the hometown favorites out of gas and, combined with some key rebounds, held on for their ninth win of the season.

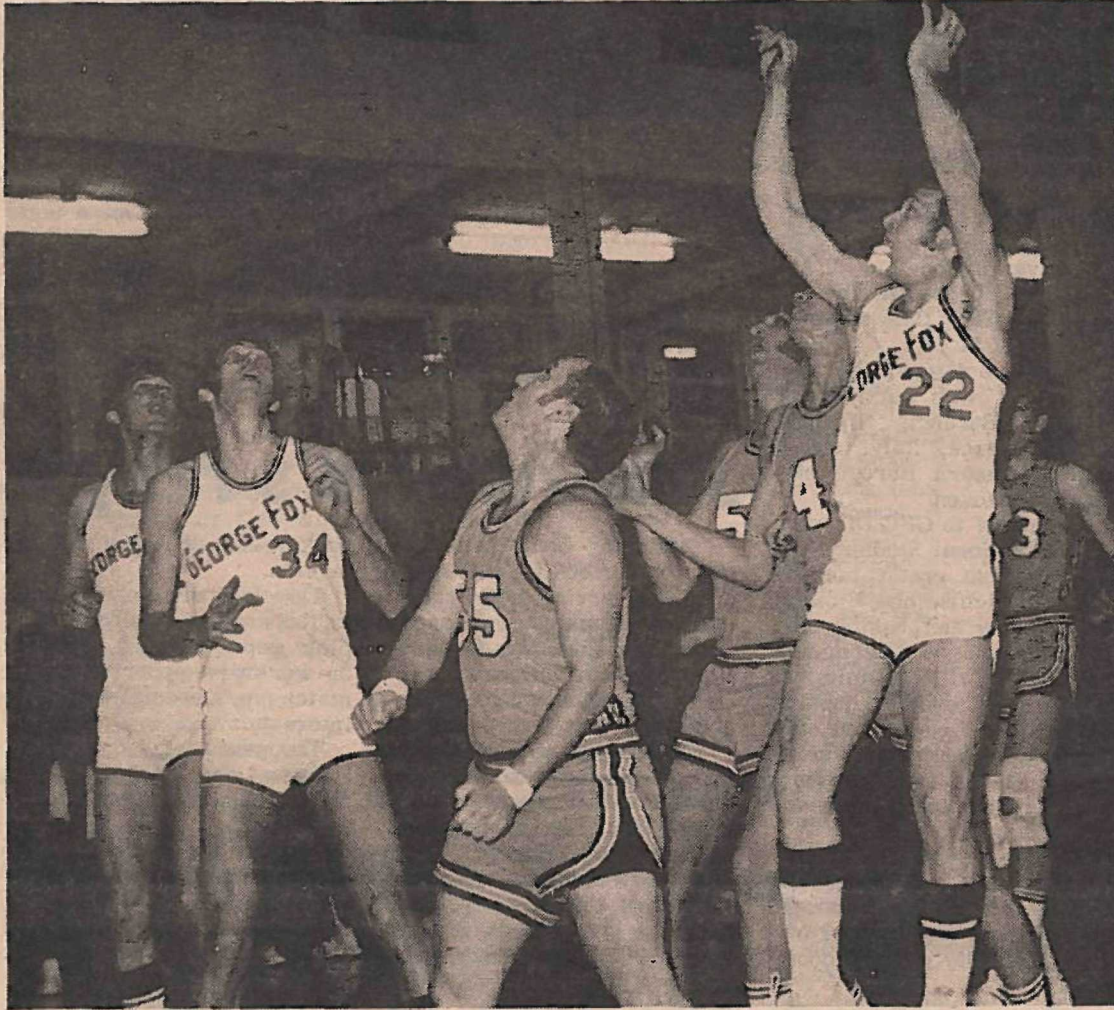
Craig Taylor pumped in 22 points for George Fox and Gary Berg added 18, while Gordy Loewen held Warner's Cal Fowler to 20, nine points

below his seasonal average.

At La Grande, Oregon, the cold weather did not seem to affect the Bruins as they blistered the nets for a 53% field goal mark. Leading 46-45 at halftime, the Bruins fell behind 83-75 with less than four minutes left to play. Then, while a noisy hometown crowd suddenly became very silent, George Fox reeled off 16 points in a row while holding Eastern to none as they picked up their third victory in a row and tenth of the season.

The Bruins placed six men in double figures, paced by Gary Berg with 18 and Sam Ibarra and Ed Fields with 13 each. The Bruins outrebounded Eastern 50-43 as Gordy Loewen controlled 12 caroms and Berg and Fields garnered seven apiece. Ron Townsend picked up 19 points to lead Eastern.

The team leaves next week on a four-day road trip into Idaho to play Lewis and Clark State in a return engagement and tangle with Northwest Nazarene at Nampa, the district's only other independent with a chance at a post-season tournament berth.



DON BURROWS (22) GOES UP for a shot during recent game with Lewis and Clark State. Gordy Lowen (34), Craig Taylor (in background) and Lewis and Clark players look on.

# Bell Back From NAIA

Ken Bell represented George Fox college in the national NAIA indoor track meet held in Kansas City, Mo. Bell competed in the two-mile run finishing with a time of 9:20 on a board track.

Bell did not qualify for the

finals as only the top six were chosen out of each heat and Bell, a sophomore from Tonasket, Wash., finished seventh in his heat. Bell's time of 9:20 broke the previous GFC record time for the two mile run.

# Students Poll City Services

George Fox students are actively interested in the Newberg community. Recent proof of this is a poll taken by George Fox students that dis-

closes how Newberg residents rate city services.

A 19-question, multiple choice survey with five questions calling for written opinions was conducted by Sammy Ibarra, a junior from El Paso, Texas, majoring in political science. Four students of the American Government class aided Ibarra - Ronda Arbogast, Charlie James,

Keith Merritt, and Steve Swar-

en. The survey was patterned after a similar survey made in The Dalles and was conducted with the cooperation of Newberg Mayor Jack Nulsen. Persons in all areas of the city were contacted.

Highlights of the survey include: City residents like their fire department service, approve of the police department, and appreciate the hospital facilities; but they object to the city's engineering service and dislike their community library. It was mentioned that between the city library and the college library, library service is excellent; but the city library alone is felt inadequate.

It was noticed by the survey that whatever shortcomings city officials may have, they are considered courteous by a majority of the people contacted. In fact, several residents complimented city officials.

**the FTD**

**"Love Bundle"**

Finest, freshest flowers professionally arranged in a re-usable, satin-white ceramic container. Available only from your FTD Florist. Just stop in or give us a call. We can send our "Love-Bundle" almost anywhere in the country.

The Flower Gallery  
1505 Portland Rd.  
538-5704

**HUNGRY TRUCK**

OPEN 24 hrs.

CLOSED SUNDAYS

Welcome  
to Newberg.

**ARCTIC CIRCLE DRIVE IN**

PH. 538-9625  
1544 Portland Rd.

See The  
**SPORT SHOP**

"First in Fashions for the Smartest in Casual Wear."  
Mickey Hodges  
621 E. First



# Bruins At Dual Meet

The Bruin wrestling team hosted College of Idaho in a dual meet, Jan. 21. George Fox had to forfeit two weights, amounting to 12 points and in the overall score including exhibition matches, C of I won 21-18.

Of the six matches wrestled, Fox won four. Highlight of the meet was a 48-second first round pin by Bryce Mercier at 134 pounds. Other winners were Chris Kienonen, second round pin at 158 pounds; Dave Powell, 7-0 at 177 pounds; and Ken Royal, 4-0 at 190 pounds. The next day, Fox hosted

last year's NAIA district two co-champions Pacific University. Fox lost all five matches, but some good performances were noted. Kienonen lost to 1970 Oregon high school state champion Ken Clock by a score of 3-0. Dave Powell lost to Curtis Sieki, two-time conference champion, by a score of 8-2.

The next match is against Willamette. The following meet will be against Columbia Christian, a team the Bruins have conquered once already this year. Some good matches are expected, and both meets could result in Fox victories.



**NEWBERG SEWING CENTER**

520 EAST FIRST STREET  
NEWBERG, OREGON 97132  
PHONE 538-9861

RENTALS - SALES - REPAIR

SINGER - BERWINA

NEW HOME - PFAFF

**Riley**  
NEWBERG, OREGON  
Phone 538-4879

- Portraits
- Commercial and Photo Finishing
- Camera Supplies